

Schedule 1

Item 1 Description of Agreement Area

A. External boundary description

The agreement area covers all the land and waters within Lot 4909 on Plan SP207172 (Kilcowera) and that part of Lot 2828 on PH276 (Zenoni) located within the Native Title Determination Application QUD53/2007 Budjiti People (QC2007/002), further described as that part of that lot east of the ridgeline described by the following coordinate points:

Longitude° East	Latitude° South
143.760045	28.774698
143.757978	28.770062
143.754799	28.764859
143.752077	28.759826
143.749542	28.754045
143.748446	28.748599
143.747397	28.741659
143.746894	28.737127
143.746384	28.731849
143.746671	28.728058
143.748055	28.723169
143.750031	28.718965
143.751690	28.715566
143.753734	28.711534
143.756108	28.708015
143.758355	28.704785
143.759305	28.702138
143.759926	28.699148
143.760929	28.695295
143.761014	28.690817
143.759996	28.686748
143.758664	28.683944
143.756356	28.681146
143.753005	28.678356
143.749057	28.674422
143.746812	28.671452
143.743392	28.668260
143.740426	28.664893
143.737578	28.660263
143.735972	28.656083
143.735741	28.652525
143.736942	28.648900
143.738474	28.645847
143.740714	28.641813
143.742317	28.639506
143.745393	28.634490
143.748414	28.630508
143.750591	28.626877
143.753222	28.622955

Longitude° East	Latitude° South
143.756172	28.618342
143.757688	28.613682
143.759075	28.609194
143.759942	28.604768
143.760357	28.600746
143.760443	28.596325
143.760917	28.591729
143.760552	28.587828
143.759476	28.584448
143.757490	28.581304
143.754200	28.578054
143.751568	28.575546
143.748540	28.572410
143.746229	28.569383
143.743980	28.565953
143.743931	28.561189
143.743833	28.557917
143.744054	28.554299
143.744210	28.550279
143.743455	28.546610
143.742306	28.542370
143.741227	28.538933
143.740461	28.534001

Note

Reference datum

Geographical coordinates have been provided by the NNTT Geospatial Unit and are referenced to the Geocentric Datum of Australia 1994 (GDA94), in decimal degrees and are based on the spatial reference data acquired from the various custodians at the time.

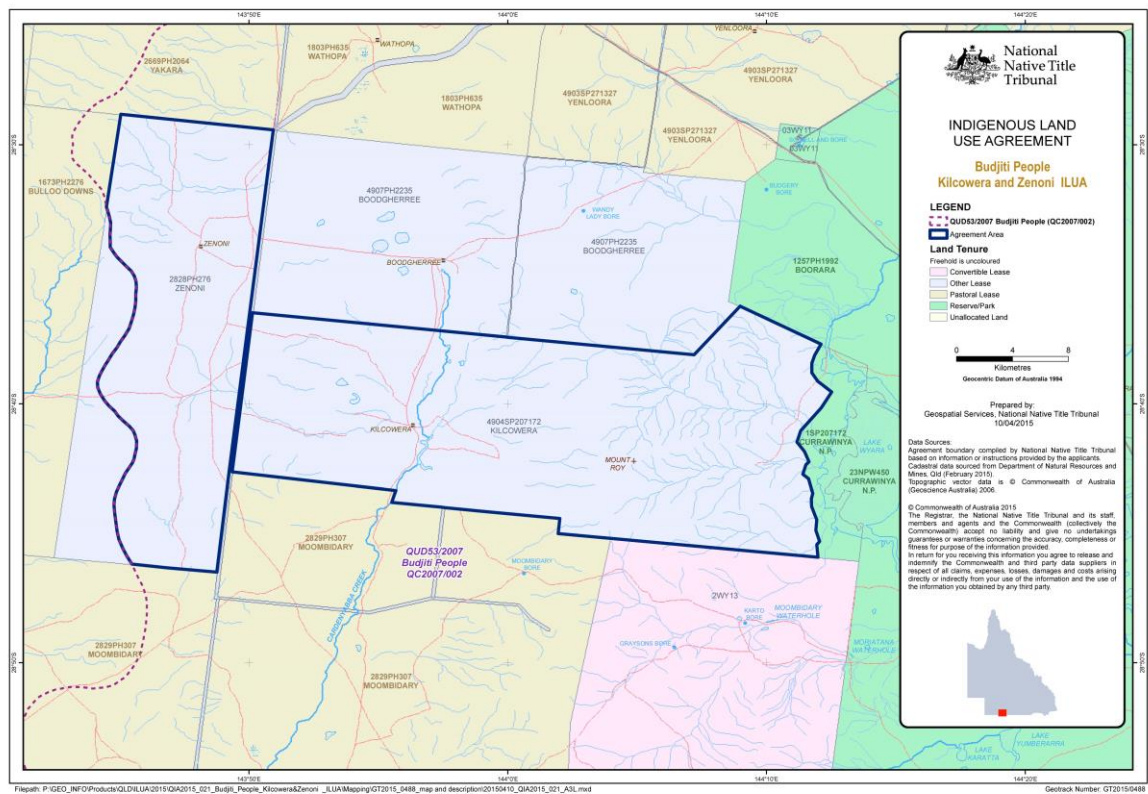
Data Reference and source

- Agreement boundary compiled by National Native Title Tribunal based on information or instructions provided by the applicants.
- Native title determination application QUD53/2007 Budjiti People (QC2007/002) as accepted for registration on 10 July 2007.
- Cadastre data sourced from Department of Natural Resources and Mines, Qld (February, 2015).
- Rivers / Creeks based on cadastral data.

Use of Coordinates

Where coordinates are used within the description to represent cadastral or topographical boundaries or the intersection with such, they are intended as a guide only. As an outcome to the custodians of cadastral and topographic data continuously recalculating the geographic position of their data based on improved survey and data maintenance procedures, it is not possible to accurately define such a position other than by detailed ground survey.

B. Map



Item 2 Description of Lease

Term Lease 232345 comprising Lot 4904 on SP207172

Pastoral Holding 15/2828 comprising Lot 2828 on PH276

Item 3 Description of Lessee

Gregory Noel Vicary Sherwin